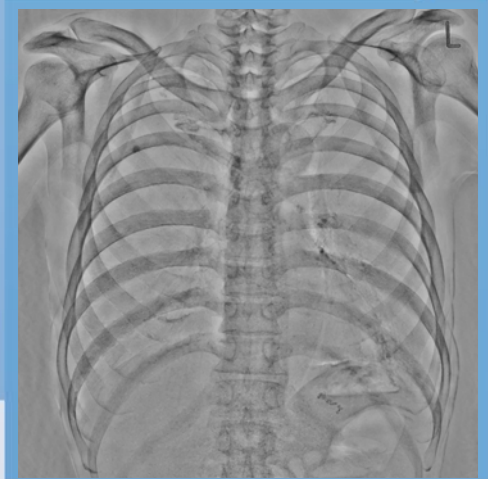
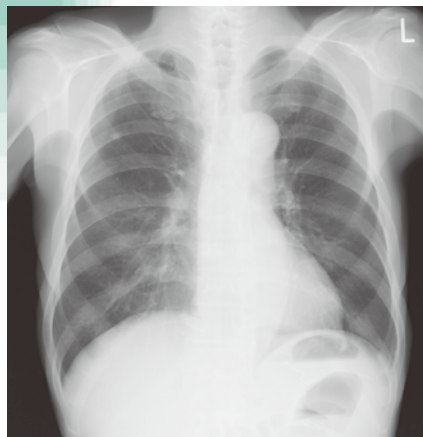


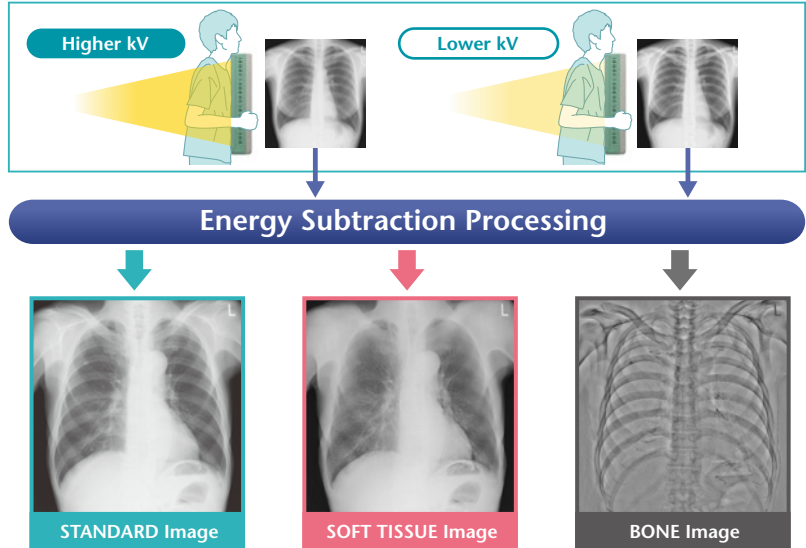
Energy Subtraction

for *FDR ACSeIerate*



• What is Energy Subtraction?

Energy subtraction (ES) is the technology which utilize the difference of Xray absorption characteristic.



Easily find out abnormalities by removing structures overlying / underlying.

Removing bone result in visualizing abnormality in soft tissue image.

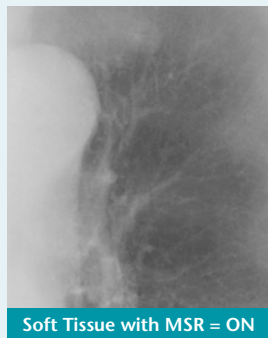
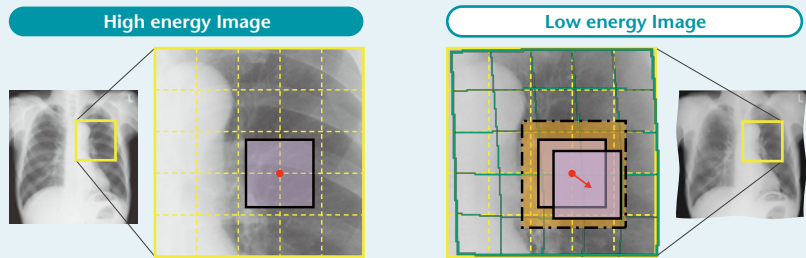
Removing soft tissue result in visualizing abnormality in bone image.

Advantage of FUJIFILM's Energy Subtraction

Multi-Stage Registration (MSR)

Patient's heartbeat and any minor patient movement between exposures causes a miss-registration image. Fujifilm's own technology which is called Multi-Stage Registration (MSR) can suppress these motion artifact.

Shift of individual pixels between the high energy image and low energy image is calculated, and the low energy image is warped to match its position to the of the high energy image to suppress motion artifacts.



Fujifilm was first in the world to develop the energy subtraction technology



Fujifilm commercialized the world's first 1 shot energy subtraction on the FCR9501ES system in 1995. In 2001, we achieved a higher image resolution ES technology called Dual Side Reading on FCR XU-D1 system. In 2011, we released 2 shot energy subtraction at the FDR AcSelerate system with Image Intelligence™ technology.

1995 FCR9501ES

2001 XU-D1

Now FDR AcSelerate



FCR: 1 shot ES

FDR: 2 shot ES

FDR AcSelerate (Model: FDR200) 0123
This equipment is a Class 2 laser product (IEC60825-1: 2007).

All brand names or trademarks are the property of their respective owners.
All products require the regulatory approval of the importing country.
For details on their availability, contact our local representative.

FUJIFILM

FUJIFILM Corporation

26-30, NISHIAZABU 2-CHOME, MINATO-KU, TOKYO 106-8620, JAPAN
<http://www.fujifilm.com/products/medical/>

Ref. No. XB-1004E (SK-12-09-F1079-F9711) ©2012 FUJIFILM Corporation