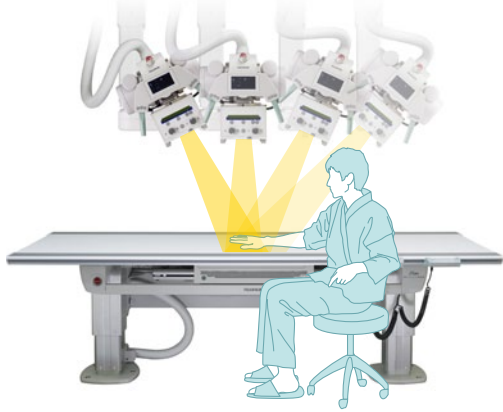


Tomosynthesis

for *FDR ACSeIerate*



• What is Tomosynthesis?



Tomosynthesis is an advanced radiography application that produces multiple tomographic slices from a single sweep of the X-ray tube. By doing so, the added dimension of "depth" can be provided to the radiologist. Tomosynthesis can be effective for a variety of clinical tasks, including chest and orthopedic imaging, otology.



Advantage of FUJIFILM's Tomosynthesis

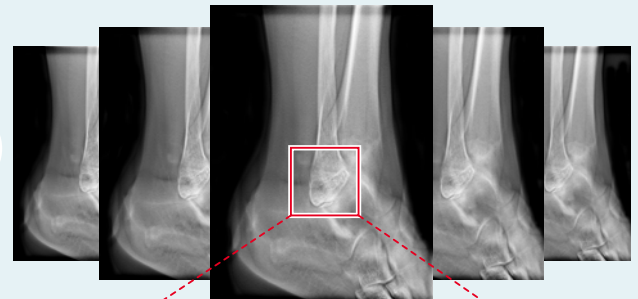
Conventional Digital Radiography

Though cost-effective and easy to perform, a standard 3-view radiographic ankle examination may not easily reveal the source of discomfort being experienced by the patient, and may result in a referral to CT.



Tomosynthesis Slice Images

With a single tomosynthesis sweep, multiple tomographic slices are produced, allowing the radiologist to evaluate the slice of the ankle at various depths and locate the problem ... a fracture of the lateral malleolus.

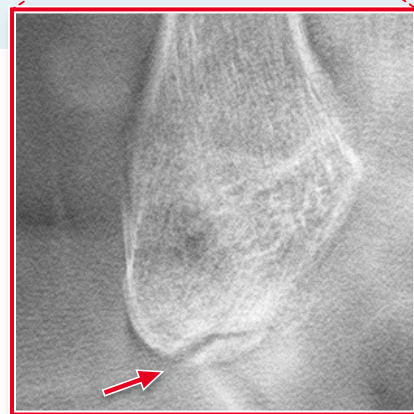


High Quality Tomosynthesis Images

- Using the FPD which features a pixel pitch of just 150 μm and ISS technology*, we achieved high quality tomosynthesis images for easier, more accurate, diagnosis.

*ISS (Irradiation Side Sampling) is Fujifilm's technology which permits a higher resolution image and reduced doses.

- Image Intelligence™, Fujifilm's proprietary image processing technology, offers high resolution, information-rich images.



Lateral Malleolus fracture

FDR AcSelerate (Model: FDR200) 0123
This equipment is a Class 2 laser product (IEC60825-1: 2007).

All brand names or trademarks are the property of their respective owners.
All products require the regulatory approval of the importing country.
For details on their availability, contact our local representative.

FUJIFILM

FUJIFILM Corporation

26-30, NISHIAZABU 2-CHOME, MINATO-KU, TOKYO 106-8620, JAPAN
<http://www.fujifilm.com/products/medical/>

Ref. No. XB-1003E (SK-12-10-F1079-F9711) ©2012 FUJIFILM Corporation