

Stereotactic Biopsy Unit for AMULET

Biopsy Positioner (Model:FDR-1000BPY)

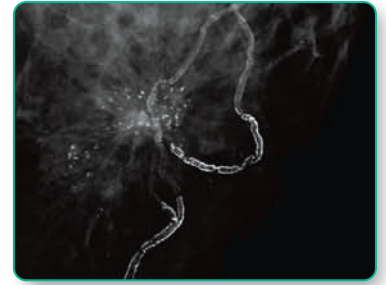
Offering accurate stereotactic biopsy examinations with high resolution imaging utilizing our unique Direct conversion Flat Panel Detector and featuring 50 μ m pixel pitch



- Easy and Accurate Positioning with several display options
- Multiple Targeting Support Functions with high resolution dual display system
- Various in-built Safety Functions

Stereotactic biopsy examination with high resolution-50µm pixel pitch

The FDR Amulet is the world's first digital mammography system to be equipped with our revolutionary direct conversion flat panel detector (FPD) technology. Its unique "Direct Optical Switching technology," captures higher resolution images with lower noise electrical signals rather than using electrical switches like conventional TFTs. By achieving both 50µm fine pixel size (higher resolution) and low noise, the AMULET system can show microcalcifications and tumours in greater detail, for more accurate and earlier diagnosis of breast cancer. This optional stereotactic biopsy system can provide absolute diagnostic confirmation.



Accurate and Efficient Stereotactic Biopsy

Easy positioning of patients

- Flexible positioning of tube and detector from -90° to +90° is available. Ergonomically designed arm rests and disposable soft pads help to make patients more comfortable.
- It is possible to review previous examinations on the system for more accurate initial positioning. Referral Image Viewing function that requests and displays images of previous examinations makes positioning easy.

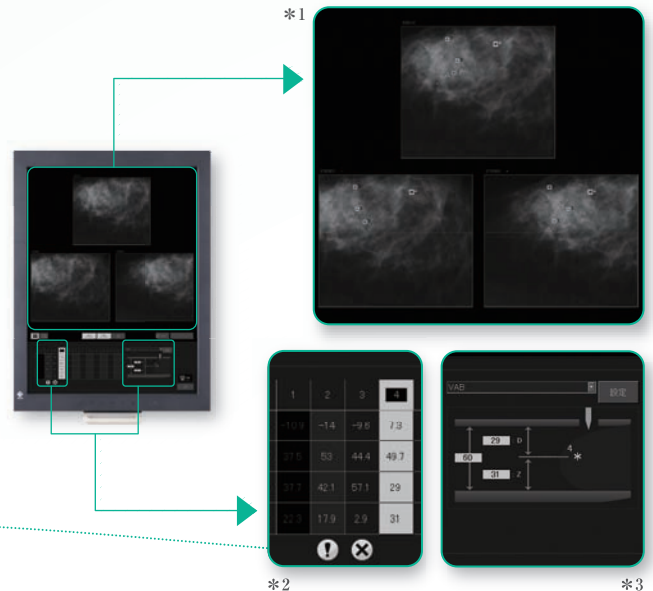


Targeting support functions

- High resolution dual display system, targeting guide function on stereo images, various image processing and other useful functions make targeting accurate and easy. *1

Safety functions

- An indication of needle depth within the breast is provided on the Biopsy device. *2
* This function helps prevent the needle from accidentally damaging the exposure table.
- Target position is shown via a diagram on the display screen. *3



Specifications

Dimensions(WxDxH): 270x205x310mm

Weight: Approx. 5.5 kg

Power source: Input voltage: AC 200-240 V Phase: Single Frequency: 50-60 Hz Rated current: 3.0A

Needles: CNB: Gauge: 14G-22G, Length: 60-120mm *For VAB products, please refer to sales representatives of FUJIFILM medical equipment.



FUJIFILM

<http://www.fujifilm.com/products/medical/index.html>

Manufacturer: FUJIFILM Corporation,
26-30, NISHIAZABU 2-CHOME, MINATO-KU, TOKYO 106-8620, JAPAN