

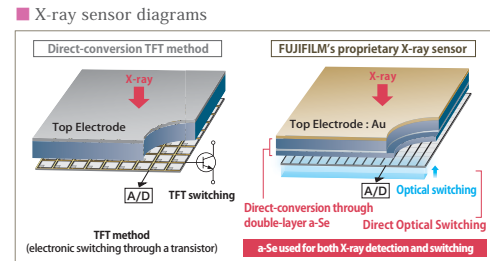
High Quality Images

High quality images for easier, more accurate, diagnosis —

Improved image quality is achieved using the FPD, which features a pixel pitch of just 50µm, and the new image processing technology

Incorporating FUJIFILM's proprietary "Direct Optical Switching" technology

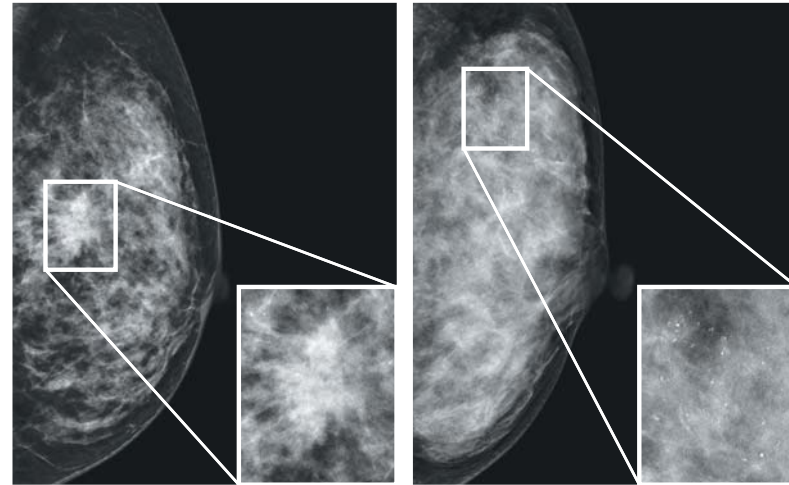
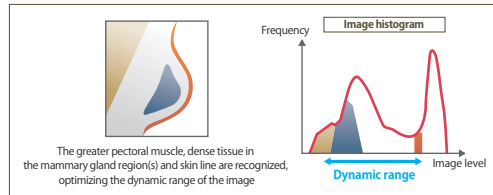
AMULET S uses a direct conversion X-ray sensor with excellent conversion efficiency. The panel is comprised of a dual layer of a-Se, employing FUJIFILM's proprietary "Direct Optical Switching" technology for extracting image signals, instead of thin film transistors (TFTs). This technology achieves lower noise and a pixel size of only 50 µm, as well as shorter intervals between exposures. AMULET S provides high definition images, high DQE and allows an optimized workflow.



New Image Processing Technology

● New Image Analysis & New Gradation Curve

New Image analysis algorithms and gradation curve processing give improved visualization of the whole breast. The greater pectoral muscle, regions of dense tissue in the mammary gland and the skin line are recognized and analyzed individually providing improved detail throughout the image. This ensures that the Image provides optimum diagnostic information.



Optional Function

Excellent examination environment —

Additional tools to support your mammography imaging

Compatible with Digital Mammography CAD (MV-SR657EG)

FUJIFILM Digital Mammography CAD is a valuable detection support system. Using proprietary algorithms, this CAD system helps detect areas on the breast image that may indicate cancer.



Compatible with FUJIFILM Mammography QC, the quality control tool for mammography (FCR 1 Shot Phantom M Plus and Mammography QC Software [optional])

With the phantom and software for FUJIFILM Mammography QC, a daily quantitative test can be completed faster than when using the procedures described in the IEC standards and EUREF guidelines. This system allows quality control of the whole mammography system to be completed including the X-ray unit.



Note: The X-ray tube/filter type (Mo/Mo, Mo/Rh or W/Rh) can be selected at the time of purchase dependent upon the intended use of the equipment.

Configuration/specifications: Digital mammography system (FDR MS-2000)

Dimensions/Weight/Power Supply

- Mammography exposure stand: 624(W)×1200(D)×1980(H)mm/Approx. 400kg/AC 200, 208, 220, 230, 240V
- Control cabinet: 510(W)×210(D)×535(H)mm/Approx. 45kg • Generator: 445(W)×315(D)×830(H)mm/Approx. 140kg
- AWS (including Operation desk* and Protection shield*): 700(W)×420(D)×1900(H)mm/Approx. 90kg/AC 110, 240V • Optional
- LCD monitor*: 376(W)×208(D)×522(H)mm/Approx. 10.4kg/AC 100-120V, 200-240V • Optional



●The exterior appearance and specifications may be subject to change without notice



<http://www.fujifilm.com/products/medical/index.html>

Manufacturer: FUJIFILM Corporation,
26-30, NISHIAZABU 2-CHOME, MINATO-KU, TOKYO 106-8620, JAPAN

Ref.No. XB-988E (A1-11-07-F1099) Printed in Japan ©2011 FUJIFILM Corporation



An evolution in Mammography

for the benefit of all women



Standard model pursuing greater usability and comfort in routine mammography



This top of the range AMULET model offers superb usability and patient comfort

A new model, suitable for routine examinations, has joined the AMULET range. With FUJIFILM's proprietary direct conversion Flat Panel Detector (FPD) AMULET s offers improved usability for Radiographers and greater comfort for patients.



● Specially designed AWS (Acquisition Workstation)

- Integrated X-ray controller allows setting and confirmation of exposure conditions on a single screen
- Examination screen can be split and switched between 1, 2, or 4 images
- Portrait-type monitor enhances both image viewing and operability
- Density and contrast can be easily adjusted while reviewing images
- The positions of left/right images can be adjusted both automatically and manually



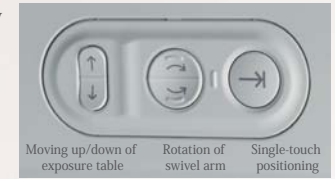
- **High definition second monitor (3M/5M:optional)**
A second high resolution monitor can be added to the AWS making it possible, if connected to PACS, to display previous images to enable more accurate examinations.

Usability

Mammography with greater comfort and improved usability —
Easy for radiographer to use and gentle on the patient

● Operation buttons

The buttons are shaped to be easily identified by touch alone.



Moving up/down of exposure table Rotation of swivel arm Single-touch positioning

● Display/color LCD

Information is displayed on screens both on the compression arm and at the foot of the unit.

● Display on the compression arm



Shows swivel arm angle, compression force and breast thickness

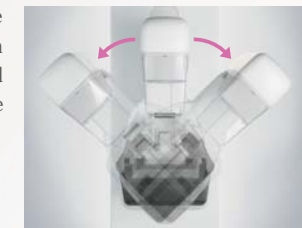
● Display at the foot of the unit



This color LCD displays the patient's demographic information.

● Single-touch function

A single-touch function allows the AMULET to be positioned automatically to the desired swivel arm angle between exposures for faster examinations and also returns the unit to the upright position once these are completed.



● Arm rests and foam pads* (*optional)

Offering well-balanced, gentle support coupled with optional foam chest wall/axilla pads to improve patient comfort during examinations.



● Compression plates

A full range of compression plates are available, including those optimised for small breasts, for more accurate positioning. Both collimation and image output sizes are automatically adjusted to 18×24cm or 24×30cm as required.

* Optional



18×30cm compression plate for small breast

Collimation for right MLO when using 18×30cm compression plate

● Unit positioning adjustment

Easy to use controls on the compression arm are provided to allow adjustment of the height of the AMULET and the swivel arm angle, and there is also the ability to vary the automatically set compression force, if necessary, using a simple dial.

