



What's New in XMF v5

Advanced cross-media workflow
at the heart of your business



XM v5 is the next fully featured release of the FUJIFILM cross-media workflow for the graphics industry. XM is built from the ground up on industry standard technologies such as JDF and the Adobe PDF Print Engine v2.5. Combined with FUJIFILM's decades of experience in image processing and colour management, this gives print service providers the flexibility and ease-of-use they need to increase their productivity, quality and efficiency.

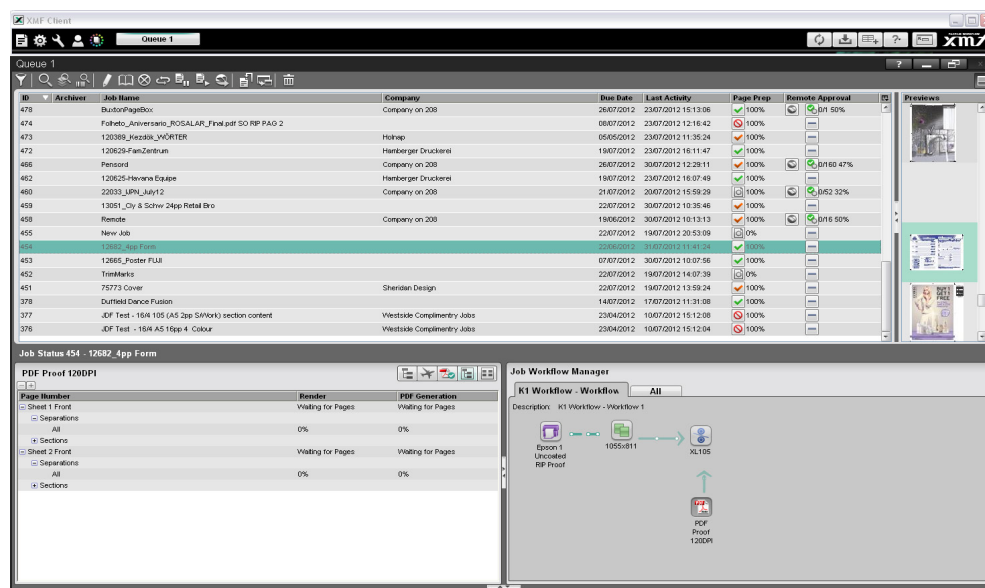
Workflow is a crucial function at the heart of a print business of any size. With FUJIFILM Workflow XM you can maximise your capacity and resources, increasing efficiency by handling late changes to content, media or press type with minimum impact on production time and cost. FUJIFILM XM enables you to respond rapidly to customers' changing demands and to develop new business opportunities. This document provides an overview of some of the exciting new features of XM v5.

Enhancement

New User Interface

XM v5 has a brand new user interface designed with a clean, modern style. The base colour of the windows has been changed to green, the corporate colour of Fujifilm. This clearly indicates to users that XM is a Fujifilm product. Nevertheless, the geographical layout of XM retains the core elements of the previous version so that existing users will find v5 familiar and easy to use.

At the same time, many improvements have taken place to make the experience for the operator a much smoother one, with fewer mouse clicks to achieve the same results. For example, a new button in the top right of the queue window reveals an integrated panel showing the status of the selected job.



XM v5 Queue Window showing integrated status panel

Simple controls also allow the interface to be customised to show only information that is relevant to the person logged on. For example the buttons  can be used to hide/show certain panes of the Job Edit window.

Improved Rendering Speed



The rendering process in XMF is now up to three times faster than before (pages with mostly text-based content benefit from the highest speed improvements).

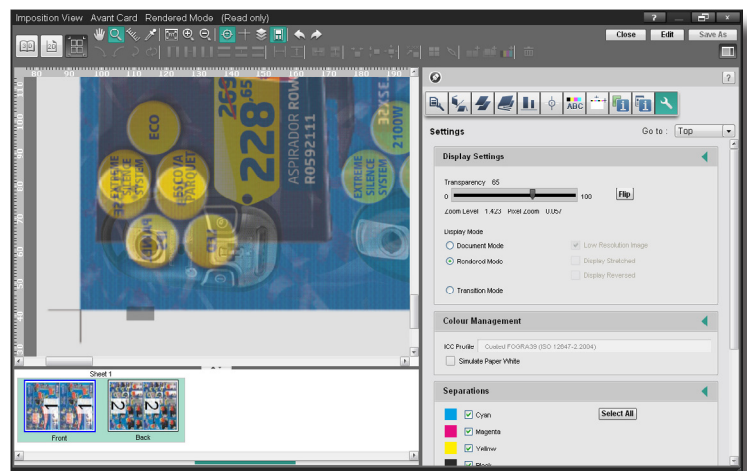
Faster Display of Rendered Surfaces

When using the imposition view to check rendered pages and surfaces, the display of rendered separations (rendered mode) is now significantly quicker than with previous versions of XMF.

Front/Back Checking

A new transparency control in the imposition editor allows the viewer to “slide” the displayed surface from the front to the back view, allowing the back-up position of pages, folios, marks etc. on the sheet to be checked easily.

The feature works in both document and rendered mode, allowing a check of actual plate data, and will also work in the 2D view, so that the back-up of individual pages can be verified.



The Transparency Slider adjusts the view from front to back surface

Easily Open Target Folders

When exporting to disk as part of a job workflow, for example if exporting a PDF, or outputting TIFF files from a plate workflow item, it is now possible to access the target folder directly from the queue window. This can be done using the context-click menu, which appears in the job queue window when clicking over the status column icon for that output type, and selecting “Open Output Folder”.

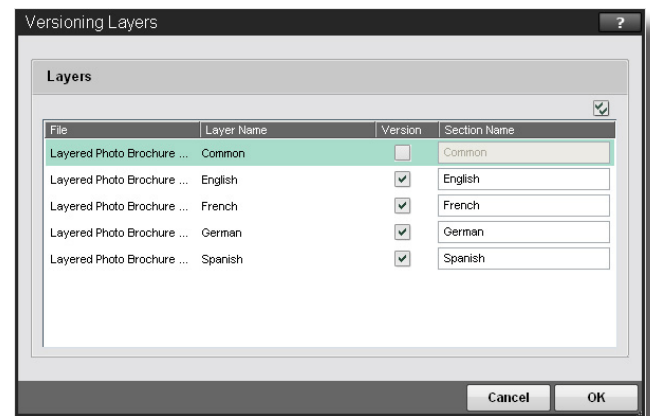
Cut and Stack

The cut and stack binding style can now be selected for an imposition, making it very simple to setup this job production method, which is often required for digital presses.

Improved Versioning

A new menu item in the Job Structure, “Add Section - Versioning” allows the simple setup of version sections by reading the layers from the incoming file, thus streamlining the process considerably. The versions that are required are simply selected in the displayed window.

Select the versions that need to be produced



Intelligent Marks

A custom mark, such as a colour bar, can now be defined with different PDF files which are selected automatically depending on the printed job. For example, a mark can be defined with alternative PDF files to be used for 4,5 or 6 colour jobs. XMF will automatically select the correct colour bar required for each particular surface, by detecting the number of colours that are actually used in the pages on that surface.

In addition, the colour bar can automatically be linked to the signature, and its width can be cropped to that of the overall folding signature, sheet or plate.

Section Proof from Signature Groups

With earlier versions of XMF it was possible to create a section proof from a sheet group with a target plate workflow. XMF v5 extends this capability with the possibility to create a section proof from a signature group which is flowing into a RIP proof workflow item.

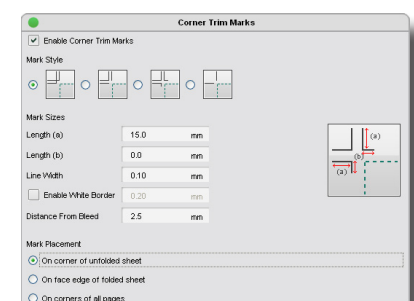
Separated PDF/PS as Source Files

When the source files are separated PostScript or PDF they are now automatically combined into a composite PDF during the page preparation process.

Corner Mark Distance

In XMF v5 it is possible to control the distance of the corner marks from the bleed edge of the page.

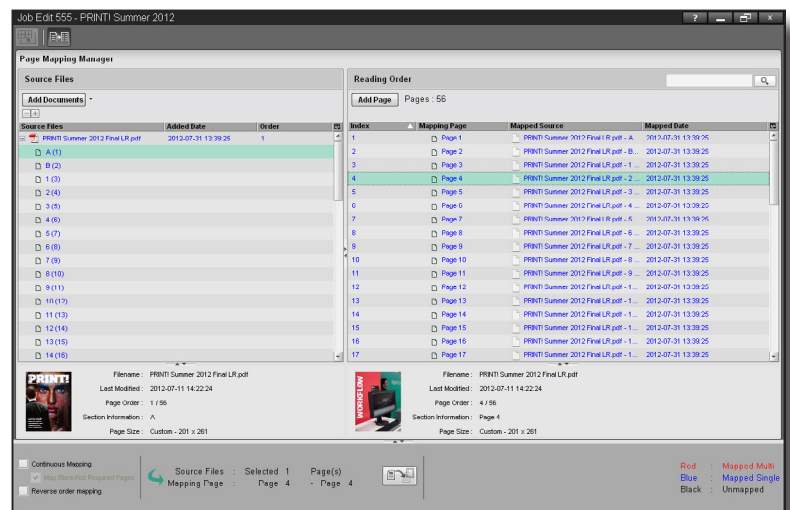
*Specify the distance from the bleed to the corner mark.
both positive and negative values are possible*



Improved Page Mapping Manager

The Page Mapping Manager benefits from several enhancements with XMF v5 including:

- Ability to control displayed columns
- Show/hide information panes with page information and thumbnails
- Reverse order page mapping
- Non-consecutive page mapping
- Confirmation of preflight results



The improved Page Mapping Manager now displays page thumbnails

General GUI Improvements

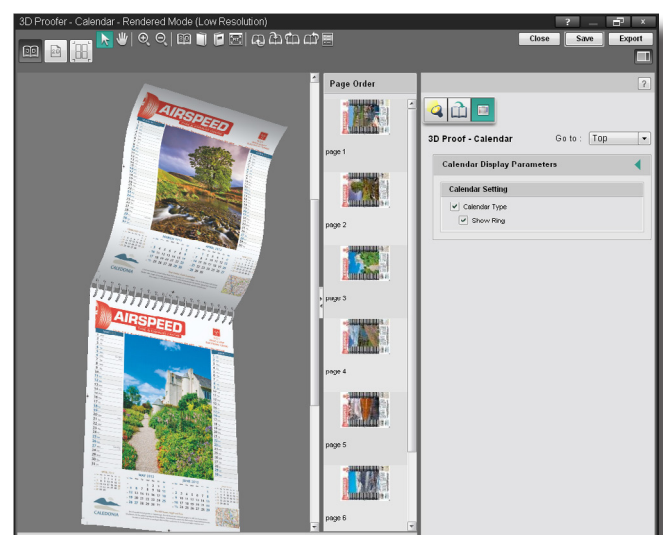
There have been numerous improvements to the XMF graphical user interface, in fact too many to mention here, but they include:

- Launch the restore window directly from the job queue
- Indication of drag-and-drop page assignments with coloured background display
- Job names' maximum length increased from 50 to 255 characters
- RIP Proof items can be placed without adding a Hold item
- The imposition colour picker shows total ink coverage as well as individual separations
- Output of CIP4 data can be retrieved from the job queue window
- Signature spacing can be shown in the imposition overlay

Calendar Folds

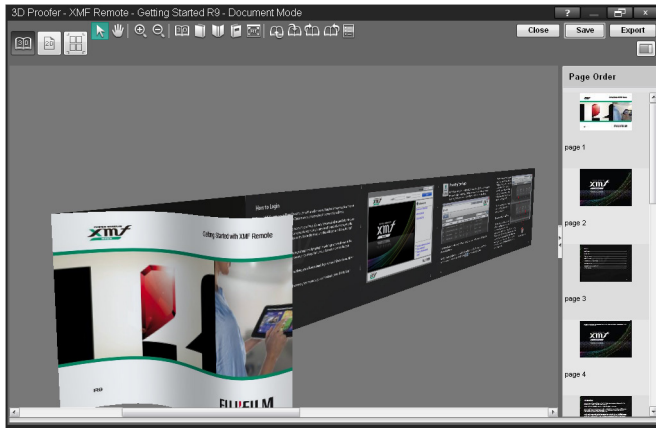
XMF v5 allows calendar-type folding jobs to be viewed using the 3D viewer

The new 3D display of calendar-type products. This view shows the option to display the ring binding in the preview



Enhanced Split for Brochure and Accordion Folds

The Split for Brochure feature has been enhanced by increasing the maximum number of pages per spread from 4 to 9. This means that an 18 page job can be processed this way. In addition, the 3D feature can show virtual proofs of accordion fold jobs with up to 18 pages.



The 3D view now allows the display of up to 9 pages per side (18 page jobs). For files supplied as spreads the Split Page for Brochure feature has been enhanced to the same level.

Improved Functionality

Pagination Mode Improvements

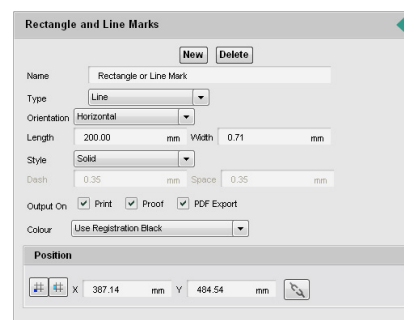
The Pagination Mode has been made easier to use in many ways, including:

- Improved creep controls
- Consecutive addition of sheets or signatures
- Auto-calculation of the required number of sheets/ signatures when copying
- Fewer clicks of the mouse are required in general, for example when creating a sheet group

Improved Functionality

Rectangle and Line Marks

A new feature has been added to the imposition editor, allowing custom lines and rectangles to be added to the press sheet.



Improved Functionality

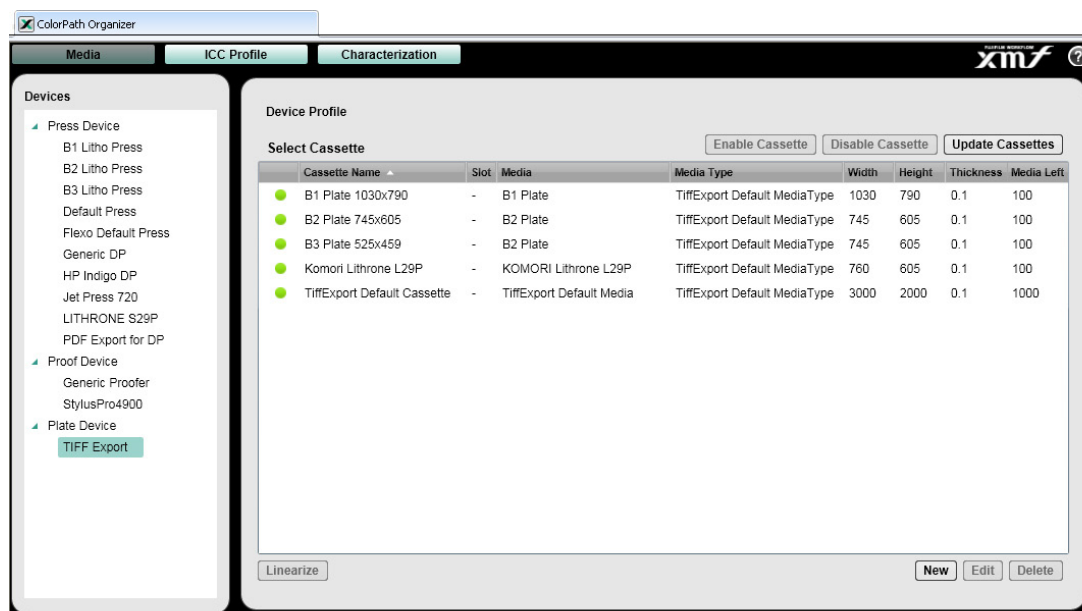
Snap & Link

In the imposition editor, when moving a signature into position on a sheet, it is now possible to automatically create a link between that signature and another signature on the sheet, so that it cannot be accidentally moved once in the correct place.

ColorPath Organizer



The all-new ColorPath Organizer functions as a global tool for the centralized management of plate and proofing devices. This includes handling media, profiles, linearisation and characterisation curves. The ColorPath Organizer replaces and improves upon the functions of the Media Profiler and Calibration Manager that were used in earlier versions of XMF.

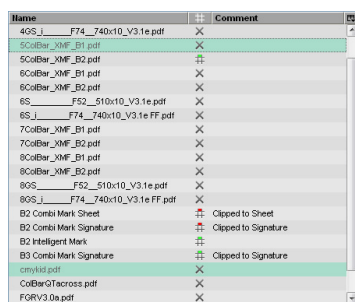


The browser-based interface of the new XMF ColorPath Organizer

Enhancement

Multiple Custom Marks

In the imposition editor, when adding a custom mark a panel is displayed from which it is then possible to add multiple custom marks in a single procedure, saving time when creating impositions.



When adding custom marks, it is possible to select multiple marks at the same time. All the selected marks will be added to the sheet simultaneously, and any marks with preset locations will automatically be placed in the appropriate positions.

Enhancement

Process Colour Replacement

When creating Finished PDF, it is now possible to replace a process colour with any other colour from the job, including a different process colour.

Connectivity to MIS

XMF version 5 has many new features that can be supported by MIS vendors:

- A new “template-based” selection method for determining job imposition

- XMF Page thumbnails can be viewed in the MIS

- XMF surface previews can be viewed in the MIS

- Identical signatures received via JDF stripping are automatically grouped, making them much easier to modify if necessary

Enhancement

PDF Export for Digital Press

The PDF export feature has been enhanced with the digital press, in particular wide format inkjet devices, in mind. The PDF Export for digital press combines the necessary functions of both the PDF Export and Digital Press workflow items in a single area. Sluglines can also now be added to PDF Export files.

And the List Goes On.....

Fujifilm XMF Workflow v5 includes many more improvements, enhancements, and new functions which are not covered in this overview document. To learn more about XMF Workflow, or any of the other XMF production suite, contact your Fujifilm Partner, ask for a demonstration of the latest versions, and see for yourself how XMF can function at the heart of your business.